



**The MultiPulse.**  
The universal laser for  
ultimate precision.



Left: Touch screen with intuitive user guidance  
Right: Wide range of accessories (handpieces, scanners, micromanipulators)

*MultiPulse.  
State-of-the-art laser technology  
with compact design*



### **Flexible all-rounder – Technology for universal use**

The proven laser technology of the MultiPulse is based on long-term studies, as well as research results in the field of surgery. Its powerful CO<sub>2</sub> laser operates precisely down into the micron range thus being suitable for the professional use in your practice or clinic. Long-standing experience with this laser technology is available in the fields of ENT and OMF surgery, ophthalmology, dermatology and gynaecology.

### **Proven in many applications – Precise cuts and scarless skin ablation**

The MultiPulse can be used universally and for many special treatments. You can, for instance, remove epithelial dysplasia safely and quickly. Thanks to its mature technology it is also well-suited to blepharoplasty, laser-assisted uvula palatoplasty (LAUP), conization and the treatment of laryngeal papillomatosis.

### **Modular diversity – Specialized accessories for flexible applications**

An extensive range of accessories is available for the MultiPulse. We supply special handpieces and micromanipulators that can be fitted to all standard surgical microscopes for a great number of treatment possibilities. Besides, two versatile scanners are available for surgical and dermatological operations. Their operating parameters can be adjusted individually on the device via intuitive touch screen. The articulated beam delivery arm is spring balanced.

### **Optimum operation – Accurate beam delivery for precise surgery**

With the precise laser beam of the MultiPulse, operation is absolutely accurate and above all scarless. Smaller blood vessels are directly thermally sealed by the CO<sub>2</sub> technology thus preventing bleeding. This in turn ensures that the operating area remains optimally visible, treatment time is reduced, and operation results are excellent.

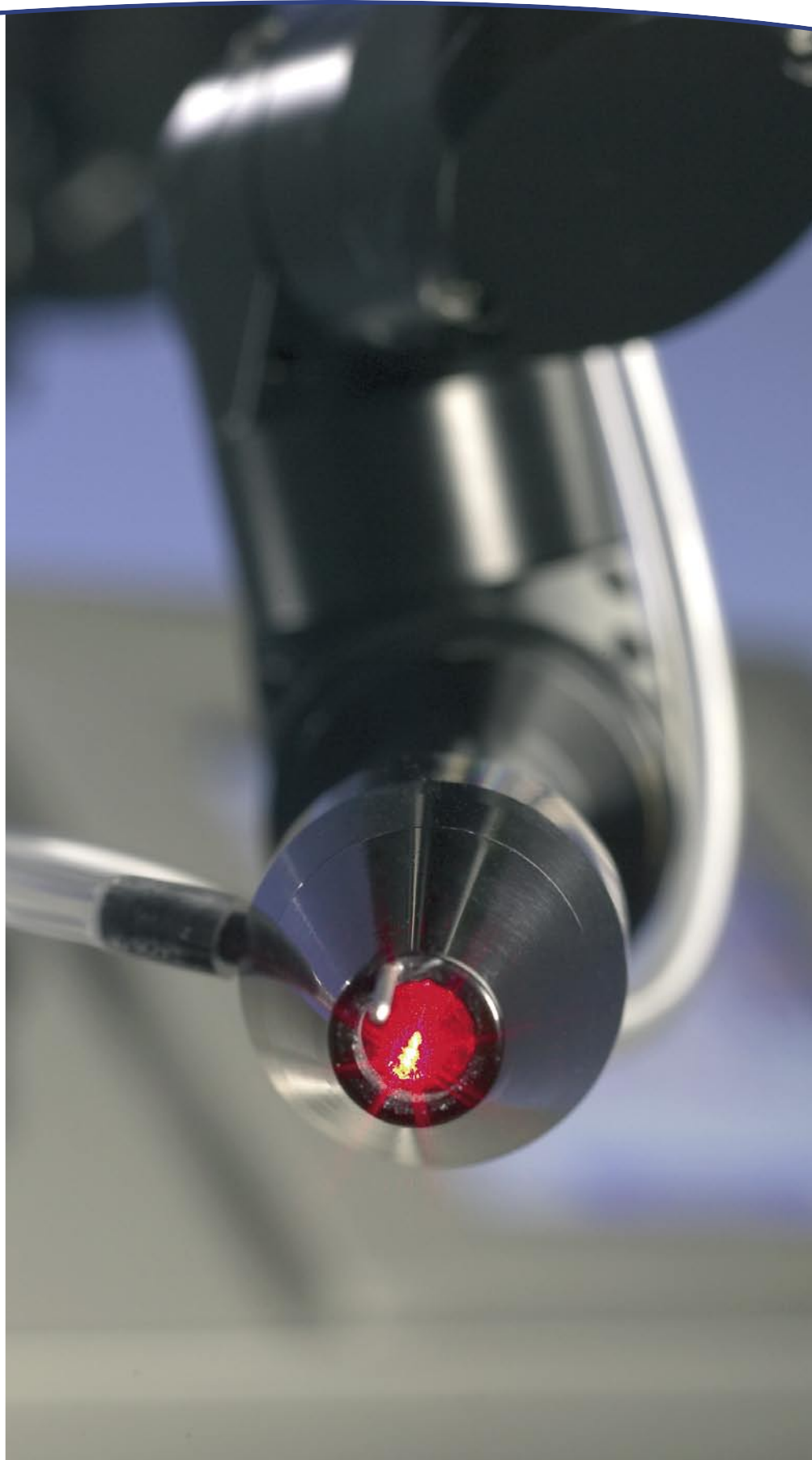
# Perfect all-rounder in surgery. MultiPulse.

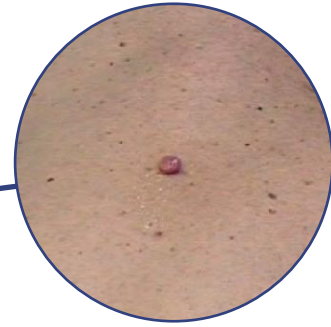
## User-oriented design – Optical highlight for your practice

In daily practice, our MultiPulse is convincing by clear, easy and safe handling. Its ergonomic design allows convenient and efficient operation of the device, represents an optical highlight in your practice, and emphasizes your professionalism.

## Clinical applications:

- ENT
- OMF surgery
- Dermatology
- Gynaecology
- Urology
- Plastic surgery
- Proctology
- Neurosurgery
- Veterinary medicine





Fibroma

(By courtesy of MU Dr. Karolina Kykalová, Prague, Czech Republic)

## The MultiPulse at a glance

Laser type	CO <sub>2</sub> gas laser
Wavelength	10,600 nm
Laser power	0.5 ... 30 W, adjustable
Operating modes	Pulsed, superpulse, continuous
Exposure time	Continuous or limited, adjustable from 0.1 to 0.9 s
User interface	Color touch screen
Beam delivery	Articulated arm with handpiece
Pilot laser	635 – 670 nm, < 2 mW, intensity adjustable in steps
Dimensions (with base)	48 x 55 x 113 cm (W x D x H)
Weight	48 kg (with articulated arm)
Power requirements	110/115 V or 220/230 VAC 50/60 Hz, max. 500 VA
Laser Class	4

Specifications are subject to change without notice.

## Accessories

- Fixed-focus and zoom handpieces
- Canula handpieces
- Micromanipulators, adaptable to all standard surgery microscopes
- Scanners

## Features

- Ergonomic design
- Small dimensions
- Easy and safe operation
- Comfortable handling
- Wide range of accessories for various applications
- Program library for treatment parameters

## Our mission

As a personal partner for professional users, we create systems of the highest quality and performance for gentle treatments in medical and cosmetic therapy.



Certified according to  
DIN EN ISO 90001:2000,  
DIN EN ISO 13485:2003  
Medical Device Directive  
93/42/EEC, Annex II

